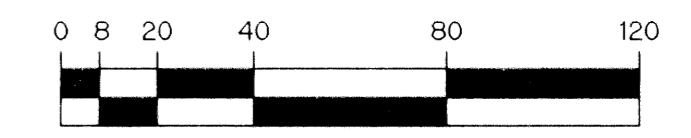
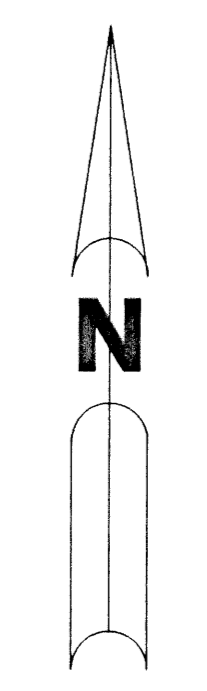


MILIN FARMS PLANNED UNIT DEVELOPMENT

# VALENCIA ISLES - PLAT THREE

BEING A REPLAT OF A PORTION OF TRACT "Q" ACCORDING TO THE PLAT OF VALENCIA ISLES - PLAT ONE, AS RECORDED IN PLAT BOOK 84, PAGES 3 THROUGH 17, INCLUSIVE, AND ALL OF TRACT "BT10" ACCORDING TO THE PLAT OF VALENCIA ISLES - PLAT TWO, AS RECORDED IN PLAT BOOK 84, PAGES 99 THROUGH 106, INCLUSIVE, ALL OF THE PUBLIC RECORDS OF PALM BEACH COUNTY, FLORIDA. LYING IN SECTION 33, TOWNSHIP 45 SOUTH, RANGE 42 EAST.

SHEET 2 OF 12 AUGUST, 1999



SCALE: 1" = 40'

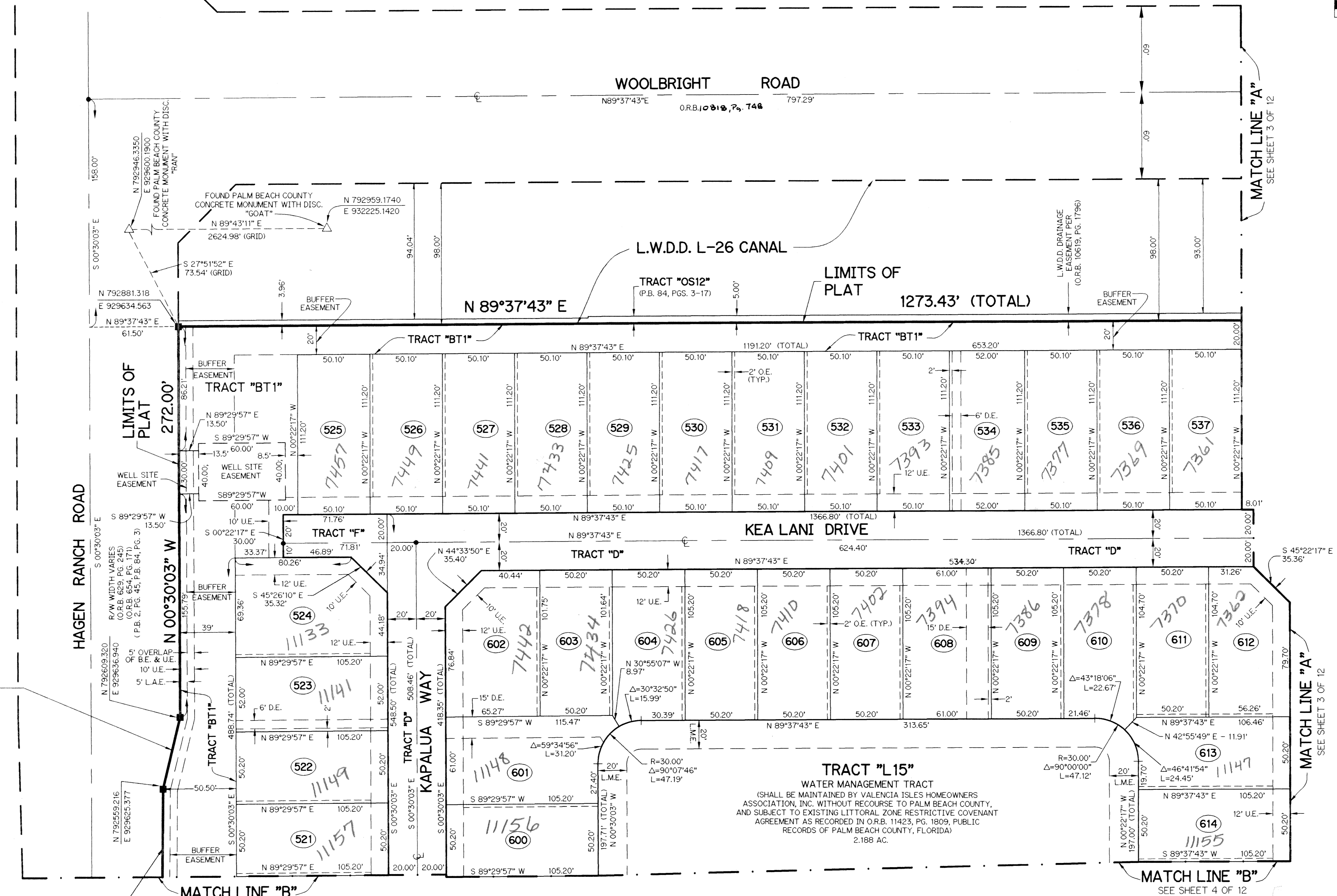
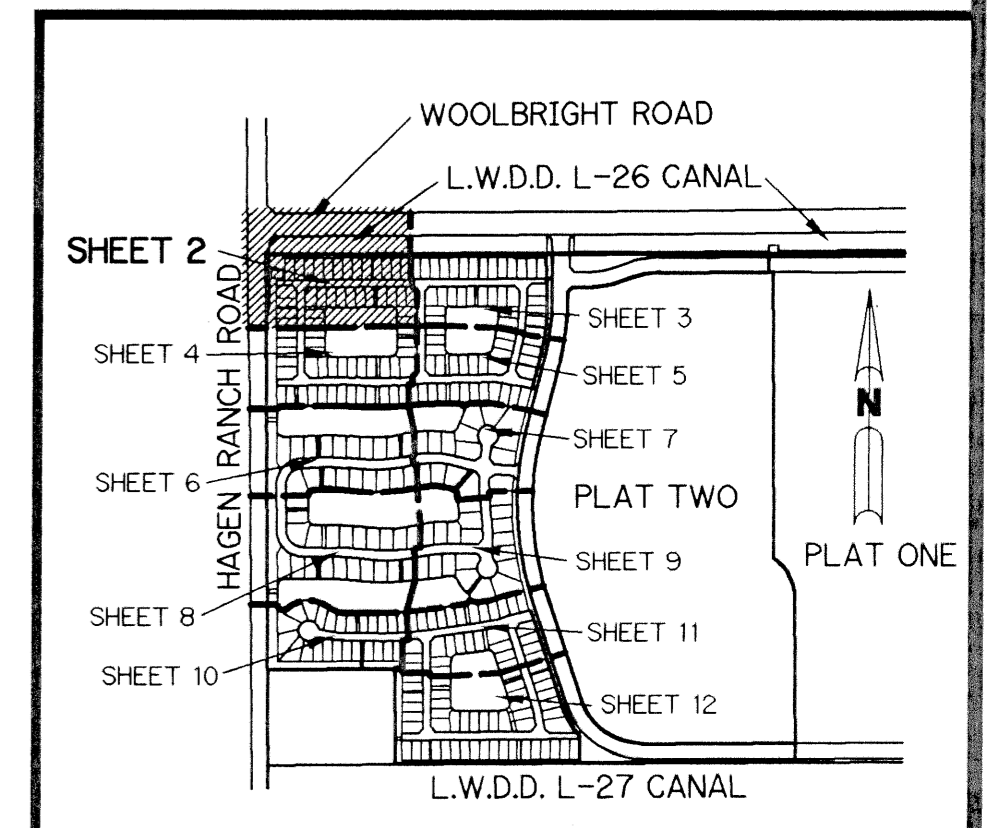
**LEGEND:**

- - SET PERMANENT REFERENCE MONUMENT, PSM #4213
  - - PERMANENT CONTROL POINT, PSM #4213
  - △ - DELTA ANGLE
  - B.E. - BUFFER EASEMENT
  - CB - CHORD BEARING
  - CH - CHORD
  - C - CENTERLINE
  - D.B. - DEED BOOK
  - D.E. - DRAINAGE EASEMENT
  - L - ARC LENGTH
  - L.A.E. - LIMITED ACCESS EASEMENT
  - L.M.A.E. - LAKE MAINTENANCE ACCESS EASEMENT
  - L.M.E. - LAKE MAINTENANCE EASEMENT
  - L.W.D.D. - LAKE WORTH DRAINAGE DISTRICT
  - N.R. - NOT RADIAL
  - N.T.S. - NOT TO SCALE
  - O.E. - OVERHANG EASEMENT
  - O.R.B. - OFFICIAL RECORD BOOK
  - P.B. - PLAT BOOK
  - P.G.S. - PAGES
  - P.S.M. - PROFESSIONAL SURVEYOR AND MAPPER
  - R - RADIUS
  - RAD. - RADIAL
  - R/W - RIGHT-OF-WAY
  - S.D.E. - SWALE DRAINAGE EASEMENT
  - S.T. - SURVEY TIE
  - U.E. - UTILITY EASEMENT
  - V.I.-1 - VALENCIA ISLES - PLAT ONE PER P.B. 84, PGS. 3-17
- N 737648.0171  
E 905258.2326 -- DENOTES STATE PLANE COORDINATES

**NOTE:**

COORDINATES SHOWN ARE GRID COORDINATES  
 DATUM = NAD 83 (1980 ADJUSTMENT)  
 ZONE = FLORIDA EAST ZONE  
 LINEAR UNIT = U.S. SURVEY FEET  
 COORDINATE SYSTEM = 1983 STATE PLANE TRANSVERSE MERCATOR PROJECTION  
 ALL DISTANCES ARE GROUND  
 SCALE FACTOR = 1.0000285  
 N 89°37'43" E (PLAT BEARING)  
 N 89°37'43" E (GRID BEARING) (PLAT = GRID)

**KEY MAP**  
N.T.S.



SUBDIVISION Valencia Isles  
 BOOK 87  
 PAGE 64  
 FLOOD MAP #2004  
 ZONING PUD  
 QUAD # 50  
 SEC 97-74  
 TAZ 452  
 PUD NAME Milin Farms

THIS INSTRUMENT PREPARED BY  
 PERRY C. WHITE, P.S.M. 4213, STATE OF FLORIDA  
 LAWSON, NOBLE AND WEBB, INC.  
 ENGINEERS PLANNERS SURVEYORS  
 420 COLUMBIA DRIVE  
 WEST PALM BEACH, FLORIDA 33409  
 LB-6674